

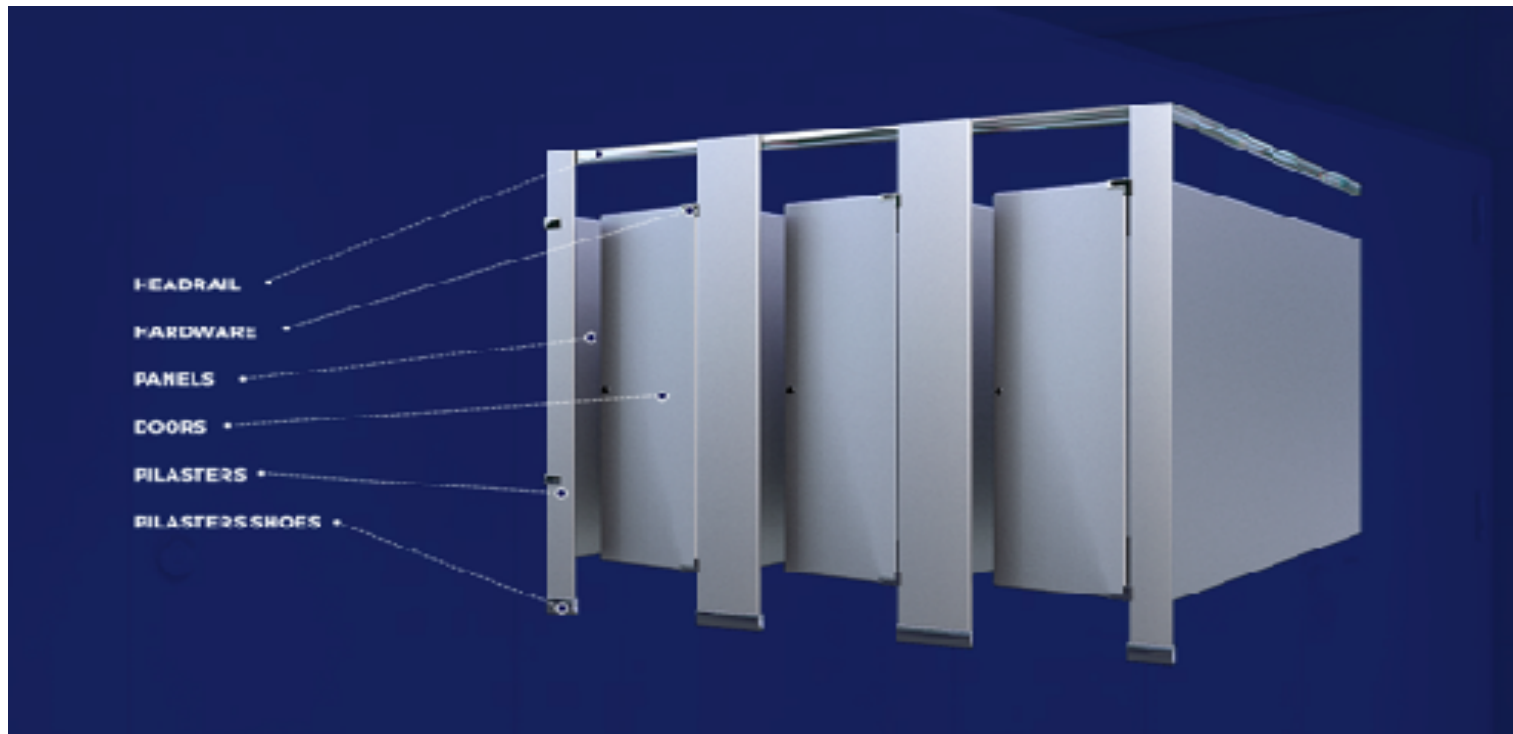
WHY CHOOSE STAINLESS STEEL PARTITIONS?



There are four big reasons stainless steel partitions are a top choice for many companies. These reasons include:

1. **Durability** – because of the strength and hardness of the material, these partitions are one of the longest-lasting of all partitions.
2. **Hygienic** – they are so easy to clean and keep sanitary, many hospitals and medical facilities choose stainless steel.
3. **Elegant** – an excellent choice for high-end retail, airports, and schools.
4. **Climate Endurance** – stainless steel can weather most types of environments from cold warehouses to hot outdoor restrooms.

MAIN PARTS OF A TOILET STALL



The panels are one-inch thick and made from two sheets of brushed and finished stainless steel that is laminated under pressure to a honeycomb core that provides natural sound-proofing. The brushed surface is anti-corrosive, so it won't deteriorate even in the harshest environments. Plus, it's inflammable.

STAINLESS STEEL PARTITIONS ARE BUILT TO LAST

- Easy to maintain with mild soap and water
- Perfect for hospital and lab environments
- Installation is easy, and panels are lightweight
- Their fire-resistance adds safety

Note: even though this material is water-resistant and prevents rust and corrosion, it will rust if it is installed in showers.

Keep this material away from water, moisture, and restrooms that have customers who are hard on the partitions.

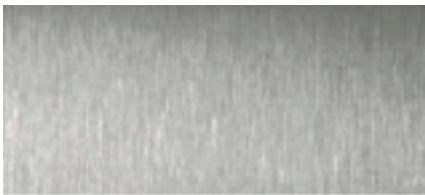


MANUFACTURED WITH THE HIGHEST STANDARDS



Honeycomb Interior

Each panel has a honeycomb interior that provides sturdy construction, rigidity, and ample soundproofing. The light-weight panels make installation easy.



Standard Finish

The standard finish is an elegantly brushed stainless steel that resists smudges, rust, and corrosion. It matches other bathroom fixtures and accessories.



Sturdy Corners

Every door, partition, and pilaster is built with strong corners that are carefully welded to withstand commercial usage. The workmanship and quality are evident.



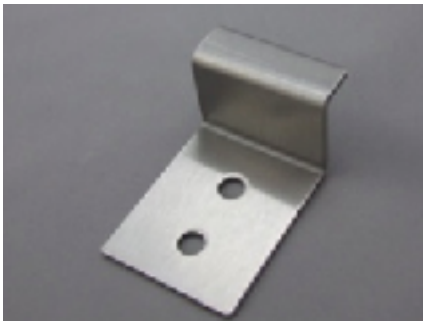
Aluminum Headrail

The headrail is a vital part of the partition system because it ensures a stable, rigid installation of your restroom compartments. These have a double-ridge to deter vandalism and unwanted activity.



Chrome-Plated

All hardware is chrome-plated zinc, which makes for easy maintenance and will look great for years. Door hinges are fully concealed and adjustable to ensure a proper close.



Stainless Steel Hooks

Each partition has sturdy flat stainless-steel hooks for purses, bags, backpacks, or diaper bags.



Stainless-Steel Shoes

This one-piece welded design is made of polished stainless steel. The shoes are easy to maintain, durable, and will remain looking good for years. The strong material helps create a sturdy partition system. Installation is simple.

MATERIAL SPECIFICATIONS

Construction - Doors, Panels, and Pilasters are two sheets of panel flatness type 304 #4 brushed finished stainless-steel, zinc-coated laminated under pressure to a “verticel” honeycomb core for impact resistance, sound deadening and rigidity. Formed edges to be welded together and inter-locked under tension with a roll-formed oval crown stainless-steel locking bar, mitered, welded, and ground smooth at the corners. Honeycomb to have a maximum 25mm (1”) cell size.

Doors - 1460mm (57.5”) high and 25mm (1”) thick with cover sheets not less than 0.8mm (.030”).

Panels - 1460mm (57.5”) high and 25mm (1”) thick with cover sheets not less than 0.8mm (.030”).

Pilasters - 32mm (1.25”) thick with cover sheets not less than 0.8mm (.030”).

Headrail - 25mm (1”) by 41mm (1.625”) extruded anodized aluminum with anti-grip design. Wall thickness to be 1.5mm (.060”) and shall be securely attached to wall and pilasters with manufacturer’s fittings in such a way as to make a strong and rigid installation. All joints in headrails shall be made at a pilaster.

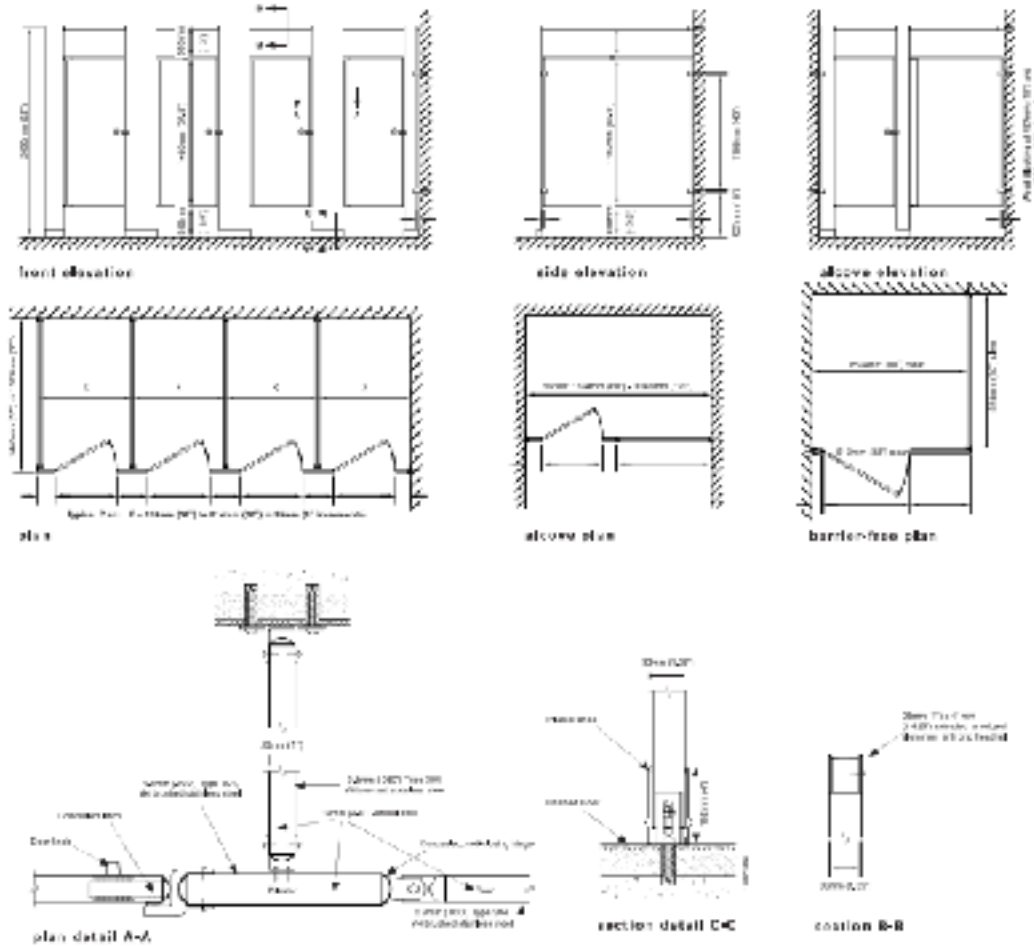
Pilaster Fastening Method - Pilasters shall be securely and rigidly fastened to the floor and fitted with a jack leveling screw for vertical adjustment. The floor fastening shall be concealed and protected by a 102mm (4”) high, die-formed stainless-steel pilaster shoe.

Hardware & Fittings - All panel and pilaster brackets and all door hardware shall be chrome plated zinc die castings. Fasteners are zinc plated 12 x 1-3/4" and 12 x 5/8" TR-27 6-lobe security screws. Doors have gravity type hinges mounted on upper and lower pilaster hinge brackets. Door hinges shall be fully concealed within the door's thickness and adjustable to permit the door to come to rest at any position when not latched. Threaded upper hinge pin shall have a metal core and self-lubricating nylon sleeve to ensure smooth, quiet operation. Each door has a combined coat hook and bumper, and a concealed latch, with face mortised flush with edge strip of the door. The combined stop and keeper shall have a 19mm (0.75") diameter bumper locked in place.

Finish – Type 304, #4 brushed finish.

HEADRAIL BRACED STANDARD

Stainless Steel - Headrail Braced STANDARD Metal Toilet Partitions



Important Note:
Refer to final drawings for wood blocking information. Wood blocking is critical to ensure a rigid installation.



CONTACT INFORMATION

www.toiletpartitions.com

Tel: 855-809-2049 | Fax: 619-562-8474

Partitions manufactured by Hadrian Manufacturing Inc.