

## BIG ADVANTAGES OF SOLID CORE PLASTIC PARTITIONS



This ultra-durable solid plastic partition material is one of the longest-lasting materials on the market. Because of that, they come with an industry-leading 25-year warranty.

Also known as HDPE or polymer, its high-quality surface structure has homogenous solid-color throughout the material, making this a top choice for restrooms with high-traffic.

The overall durability makes this a popular choice for restroom partitions in schools, stadiums, airports, and other public facilities that need a partition that will stand the test of time.

## MAIN PARTS OF A TOILET STALL



The standard partition series includes one-inch thick solid plastic material with aluminum hardware and silver shoes. Rust and corrosion WILL NOT build-up on this material. But, if there is any damage from customers, you can make minor repairs to the solid core plastic.

Installation is no more difficult than with any other panels. However, these are much heavier to move around.

## SOLID CORE PLASTIC PARTITIONS ARE BUILT TO LAST

- Easy to Maintain with mild soap and water
- Graffiti Resistant allows most graffiti to be removed
- Certified Class B Fire Rating that meets ASTM E 84 requirements
- Minimum of 30% Recycled Content
- 25-Year Warranty you can trust



## MANUFACTURED WITH THE HIGHEST STANDARDS



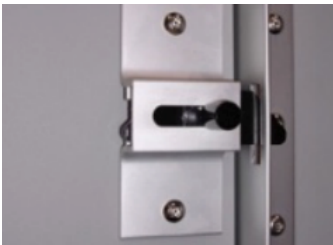
### **Solid Core – No Air Pockets**

Our solid core plastic doesn't contain foaming agents, which can cause air pockets. You will be receiving an actual "High Density" product. That means your partitions will have the durability they need to last for years and remain looking good.



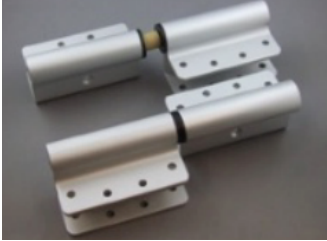
### **Thick Plastic**

Solid plastic material manufactured to one inch thick for all doors, panels, and pilasters. This material was specifically developed to withstand abuse and heavy usage while remaining strong for years.



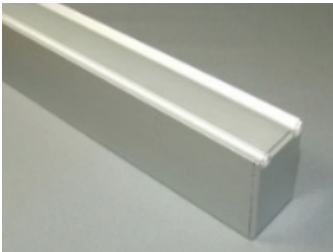
### **Aluminum Latches**

Latches get a lot of use and abuse, so it's essential to have heavy-duty aluminum ones that will stay in place, remain closed, and keep working.



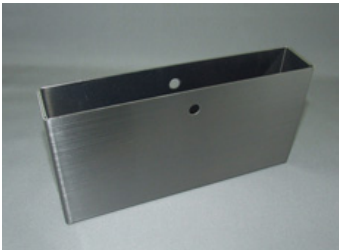
### **Aluminum Hinges**

If a hinge goes bad, damage can occur. That's why we supply only the best aluminum hinges that will keep the door in place, level, and opening and closing as it should.



### **Aluminum Headrail**

The headrail is a vital part of the partition system because it ensures a stable, rigid installation of your restroom compartments. These have a double-ridge to deter vandalism and unwanted activity.



### **Stainless-Steel Shoes**

These easy to maintain and durable, Hadrian's 3" (76mm) high stainless-steel anchor shoes look good and are easy to install. Both the floor to ceiling and ceiling-hung toilet partitions use 4" (102mm) high stainless-steel shoes.

## MATERIAL SPECIFICATIONS

**Construction** - CLASS B polyethylene solid plastic doors, panels, and pilasters with no foaming agents that cause interior bubbles. The surface is self-lubricating to resist marking and is easy to maintain with mild household cleaners. This material is ideal for toilet partition installations, especially in high moisture and abuse environments.

**Doors** - (25mm) 1" thick by (1397mm) 55" high straight cut fine radius edges.

**Panels** - (25mm) 1" thick by (1397mm) 55" high straight cut with fine radius edges.

**Pilasters** - (25mm) 1" thick by (2083mm) 82" high straight cut with fine radius edges.

**Headrail** - 32mm (1.25") by 44mm (1.75") extruded anodized aluminum with anti-grip design. Wall thickness 1.5mm (0.060") and should be attached securely to that wall and pilasters with manufacturer's fittings to ensure a rigid installation. All joints in headrails shall be made at a pilaster.

**Pilaster Fastening Method** - Pilasters shall be securely and rigidly fastened to the floor with 3" (76mm) high stainless-steel anchor shoes. Plastic anchor shoes are also available in colors to compliment the partitions. Three heavy-duty aluminum brackets for the pilaster to wall connection.

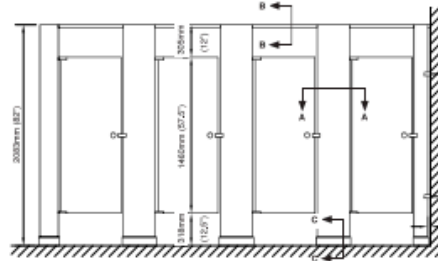
**Hardware & Fittings** - Doors are installed with 1/8" thick heavy extruded clear anodized aluminum hinges, which wrap around the plaster and door. Hinges are fastened to plaster and door with tamper-proof 6-lobe security head stainless steel thru-bolts and fastened to the edge of the door and pilaster with a #10 x 1" screw.

Top hinges have adjustable nylon cams. Strike-keeper and throw latch are extruded clear anodized aluminum. Three heavy-duty aluminum brackets are used at the panel to wall connection, and a full-height continuous aluminum channel is used at the panel to pilaster connection. Inswing doors shall be fitted with a zinc die-cast, #4 brushed combined coat hook, and bumper. Outswing doors shall be fitted with a #4 brushed stainless steel flat coat hook. Fasteners are theft-proof 6-lobe security head stainless steel screws. Hadrian hardware meets ADA and Canadian barrier-free requirements.

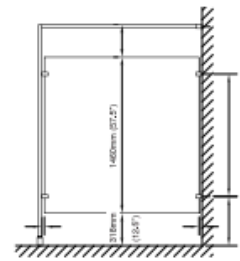
**Finish** - Doors, panels, and pilasters are certified CLASS B polyethylene with uniform color throughout. Color to be selected from options provided by ToiletPartitions.com.

# HEADRAIL BRACED STANDARD

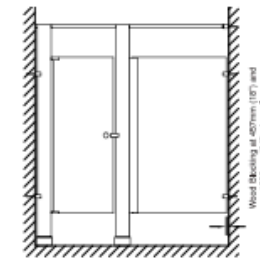
## Stainless Steel - Headrail Braced STANDARD Metal Toilet Partitions



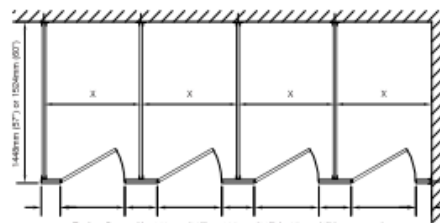
front elevation



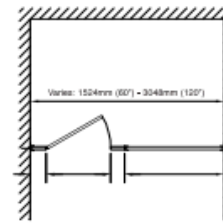
side elevation



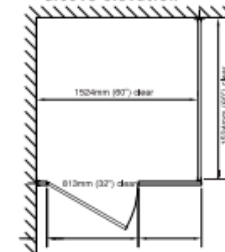
alcove elevation



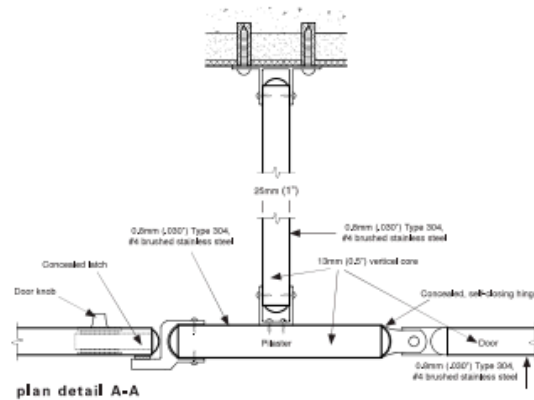
plan



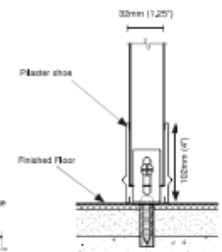
alcove plan



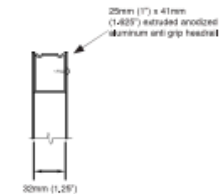
barrier-free plan



plan detail A-A



section detail C-C



section B-B

**Important Note:**  
Refer to final drawings for wood blocking information. Wood blocking is critical to ensure a rigid installation.

## CONTACT INFORMATION

[www.toiletpartitions.com](http://www.toiletpartitions.com)

Tel: 855-809-2049 | Fax: 619-562-8474

Partitions manufactured by Hadrian Manufacturing Inc.