

INDESTRUCTIBLE PHENOLIC PARTITIONS

If you're looking for toilet partitions that are available in a variety of colors and textures, waterproof and made from a material that is virtually indestructible phenolic partitions (sometimes called compact laminate) is your best choice.

This durable material is a smart selection for high-traffic areas because it will stand up to humidity, wear, abuse, and continue to look good for years.

The overall durability makes these a popular choice for restrooms in beach resorts, swimming pools, hotels, sports stadiums, shopping malls, gyms, schools, restaurants, bars, or any busy public venue.



MAIN PARTS OF A TOILET STALL



The standard partition series includes $\frac{3}{4}$ inch thick solidly fused plastic laminate with matte-finish melamine surfaces, colored face sheets, and black phenolic-core that are integrally bonded. The edges are black. They are equipped with stainless-steel hardware and silver shoes. The anti-graffiti surface helps keep marks from adhering, But if graffiti does occur, it's easy to clean without leaving marks or shadows behind.

PHENOLIC PARTITIONS ARE BUILT TO LAST

- Incredible 25-Year warranty
- Waterproof and steam resistant surface
- Graffiti resistant and non-ghosting
- Indestructible including fire-proof bullet-proof, scratch-proof and easy to clean with mild detergent



MANUFACTURED WITH THE HIGHEST STANDARDS

Compact Laminate

3/4-inch-thick solid-core construction panels, doors, and pilasters are sturdy and durable.

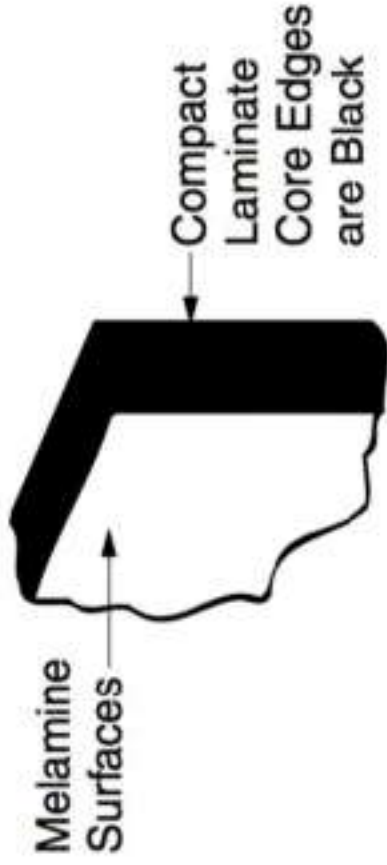
This virtually indestructible material is perfect for toilet partitions in high-traffic areas, including those with high-moisture.

Graffiti removal is easy, and the surface comes clean without leaving a shadow or "ghost" of the graffiti after removal.



$\frac{3}{4}$ Inch Thick Panels

This illustration shows the solid core compact laminate with clean black edging. The melamine surface comes in a variety of colors and textures to complement any restroom design.



Standard Concealed Stainless-Steel Hardware



- Headrail has a double-ridge to deter vandalism and unwanted activity
- Long-lasting heavy-gauge type 304 stainless steel
- Strong hinges adjust for partial opening or self-closing
- Slide latch with keeper so, doors stay closed
- Clothes hook for the convenience of your patrons
- Emergency access inswing doors increase safety

Secure Connections



- Stile connection is 7-gauge bar factory-installed
- Stainless wedge floor anchors 3/8" (10mm) diameter
- One-piece shoe conceals leveling device
- Hardware secured with metal-to-metal contact
- Withstands 1500 lbs. of pull-out force
- Pin-in-Head Torx screws are vandal-resistant

MATERIAL SPECIFICATIONS

MATERIALS:

Stiles — 3/4" (19mm) thick, solidly fused plastic laminate with matte-finish melamine surfaces, colored face sheets, and black phenolic-resin core that are integrally bonded. Edges are black. **Leveling Device:** 3/16" (5mm) thick, corrosion-resistant, chromate-treated, double zinc-plated steel angle leveling bar bolted to stile; furnished with 3/8" (10mm) diameter threaded rods, hex nuts, lock washers, flat washers, spacer sleeves, expansion anchors, and shoe retainers. **Shoes:** 18-8, Type-304, 22-gauge (0.8mm) stainless steel with satin finish; 4" (102mm) high.

**Stiles for 1086 Series floor-to-ceiling anchored have a leveling device at each end.*

Panels — 1/2" (13mm) thick, solidly fused plastic laminate with matte-finish melamine surfaces, colored face sheets, and black phenolic-resin core that are integrally bonded. Edges are black.

Urinal Screens — 1/2" (13mm) thick, solidly fused plastic laminate with matte-finish melamine surfaces, colored face sheets, and black phenolic-resin core that are integrally bonded. Edges are black.

Doors — 3/4" (19mm) thick, solidly fused plastic laminate with matte-finish melamine surfaces, colored face sheets, and black phenolic-resin core that are integrally bonded. Edges are black.

Posts (for 1083 Series screens only) — 1-1/4" (32mm) square tubing; 18-8, Type-304, 18-gauge (1.2mm) stainless steel with satin finish. Floor and ceiling connections are constructed of 18-8, Type-304, heavy-gauge stainless steel. Furnished in 10-ft (305-cm) lengths; to be cut in field to job specifications.

Headrail (for 1082 Series compartments only) — Extruded anodized aluminum with satin finish. Enclosed construction with sloping top. Face has raised grip-resistant edge. **Designer's Notes:** Headrails with integral curtain tracks and hooks are available for compartments without doors. Optional vinyl curtains are available.

Wall Posts — 1" x 1-1/2" (25 x 38mm) tubing; 18-8, Type-304, 16-gauge (1.6mm) stainless steel with satin-finish, 58" (147cm) high, pre-drilled for door hardware.

Commercial Hardware (standard) — Hinges, door latches, door keepers, clothes hooks, mounting brackets and door handles are constructed of 18-8, Type-304, heavy-gauge stainless steel with satin finish. Threaded inserts are factory installed for securing hinges and door latches. Theft-resistant, stainless steel pin-in-head, torx screws are furnished for door hardware and all mounting brackets. Black rubber bumper on the latch serves as door bumper for inswing door. Balanced hinge is adjustable to hold door of unoccupied toilet compartment partially open or fully closed. Toilet compartment door is locked from inside by sliding door latch into keeper. A locked compartment may be opened from outside by lifting door to disengage latch from keeper. Track of door latch prevents inswing door from swinging out beyond stile; on outswinging door, the door keeper prevents it from swinging in beyond stile. Door handles and latches have operable parts that are operable with one hand and do not require tight grasping, pinching, or twisting of the wrist; and comply with ADA Sections 404.2.7 and 309.4. The force required to activate the operable parts shall be 5 pounds (22.2N) maximum.

Institutional Hardware (.67 option) — Hinges, door latches, door keepers, clothes hooks, mounting brackets and door handles are constructed of 18-8, Type-304, heavy-gauge stainless steel with satin finish; one-piece, full-height hinge is 16 gauge (1.6mm); one-piece door keeper is 11 gauge (3.2mm); one-piece, full-height U-channels and angle brackets are 18 gauge (1.2mm). U-channels secure panels to stiles, and angle brackets secure panels and stiles to walls. Optional two door stops (#10E2510) prevent door from being kicked in/out beyond stile by vandals. A locked compartment may be opened from outside by lifting door to disengage latch from keeper. Theft-resistant, stainless steel pin-in-head, torx screws are furnished for door hardware, U-channels, and angle brackets. Doors are equipped with a self-closing hinge. Threaded inserts are factory installed to secure door hinge and latch. Track of door latch prevents inswing door from swinging out beyond stile; on outswinging door, the door keeper prevents it from swinging in beyond stile. Door handles and latches have operable parts that are operable with one hand and do not require tight grasping, pinching, or twisting of the wrist; and comply with ADA Sections 404.2.7 and 309.4. The force required to activate the operable parts shall be 5 pounds (22.2N) maximum.

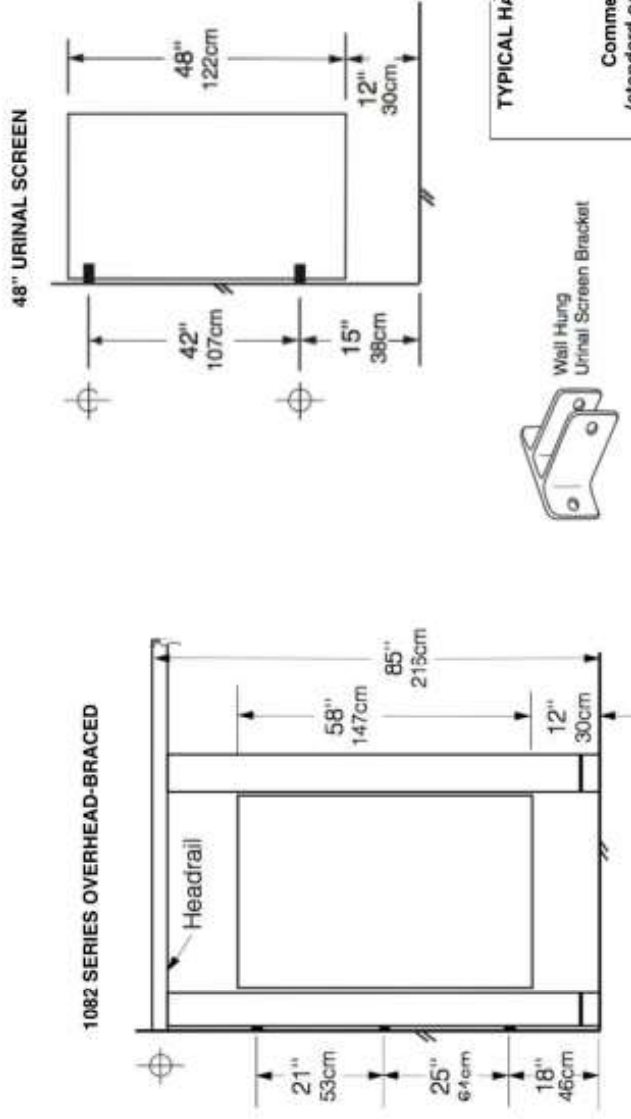
To specify institutional hardware, add suffix .67 to series number. Example: specify 1082.67 for overhead-braced partitions furnished with institutional hardware, including factory-installed threaded inserts for door hardware attachment.

INSTALLATION:

Bobrick installation instructions are packed with each shipment and are available also in advance on request.

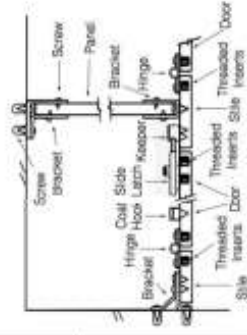
OVERHEAD BRACED INFORMATION

COMPARTMENT AND SCREEN ELEVATIONS



TYPICAL HARDWARE DETAILS

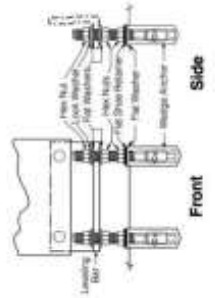
Commercial Hardware
(standard on all compartments)



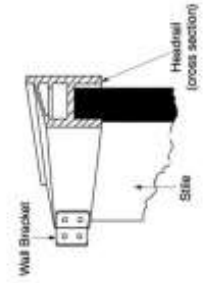
⊕ These mounting points require backing. For suggested backing methods, Sobrick Advisory Bulletin TB-32 for ceiling-hung installations and TB-46 for floor-anchored are available upon request.

TYPICAL INSTALLATION DETAILS

Floor Leveling Device



Overhead-Bracing





CONTACT INFORMATION

www.toiletpartitions.com

Tel: 855-809-2049 | Fax: 619-562-8474

Partitions manufactured by Bobrick Manufacturing Inc.